

Climate Programme

Ariane Crampton, Head of Carbon Reduction

What is our Climate Agenda for Wiltshire?

1. Reducing greenhouse gas emissions rapidly across the county. The council has stated an ambition to seek to make Wiltshire carbon neutral by 2030 which will require large scale, coordinated change across all sectors of the economy, homes and transport.
2. Improving our resilience to the changes in climate Wiltshire will face, such as hotter drier summers, warmer wetter winters, increased frequency of extreme weather and flooding.

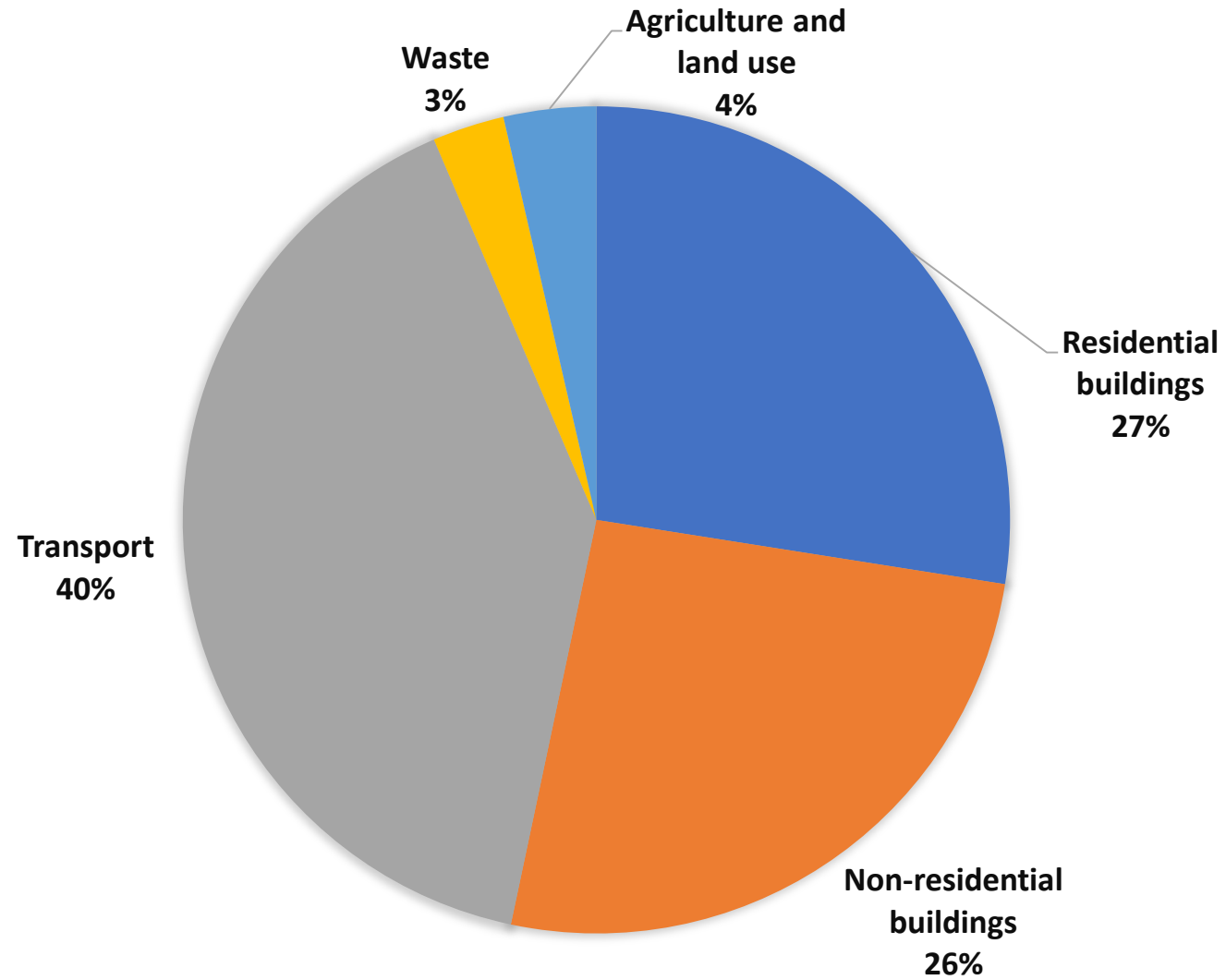


Wiltshire's carbon footprint

- Current footprint estimated in 2019 using the SCATTER tool for local authorities (Setting City Area Targets and Trajectories for Emissions Reduction)
- The total level of emissions is 3.465m tCO₂e per annum. Based on a population of 498,000 this gives emissions per head of 7 tCO₂e per annum.
- NB the tool does not include emissions from imported goods, as SCATTER provides a location based rather than a consumption based emissions profile.
- The sources of emissions are...

WILTS GREENHOUSE GAS EMISSIONS - SCATTER ANALYSIS

2019



Stakeholders include...

- Public sector partners – Wiltshire Public Service Board, schools
- Businesses – Local Enterprise Partnership, Chambers of Commerce, trade bodies
- Voluntary and community sector
- Local residents



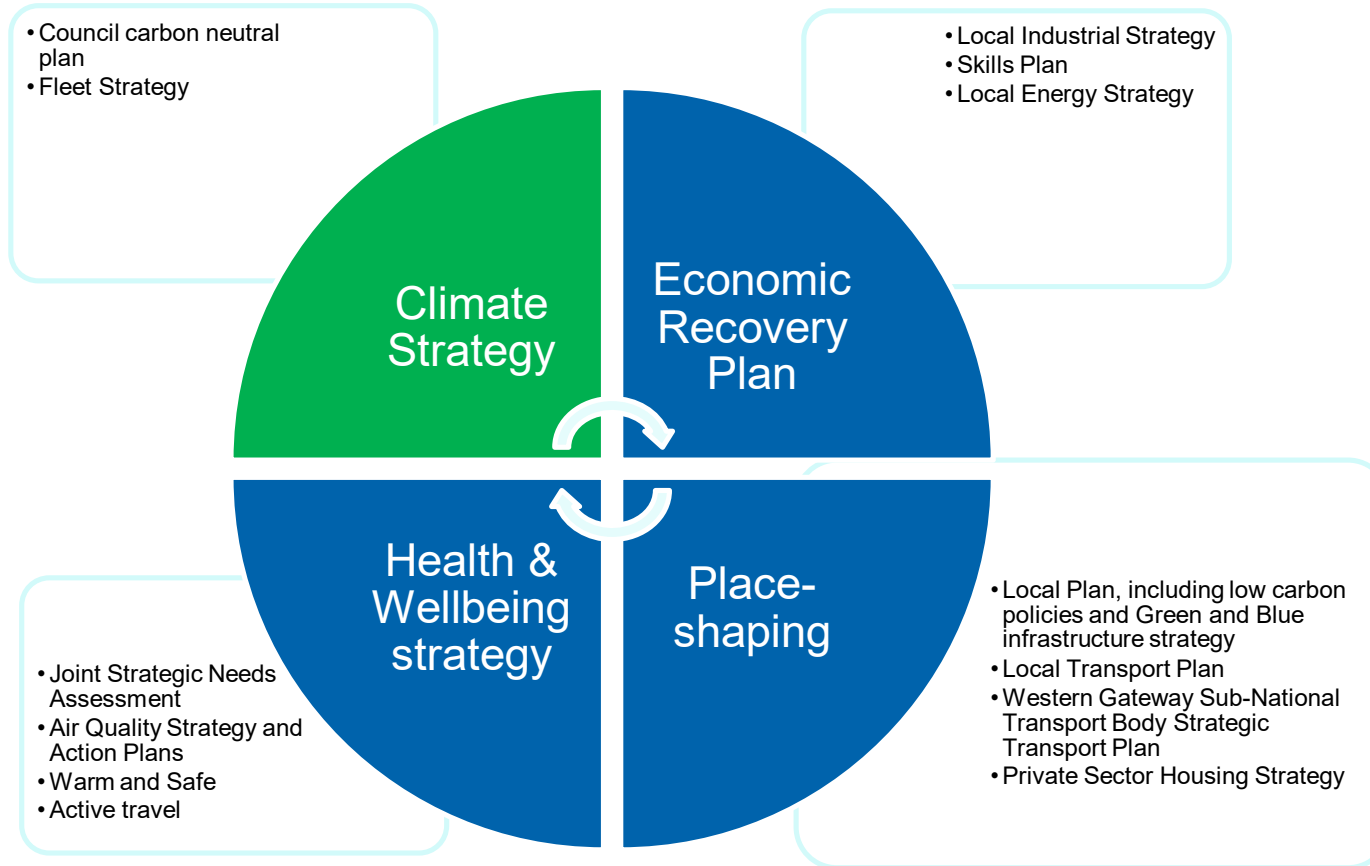
Swindon & Wiltshire
LOCAL ENTERPRISE PARTNERSHIP



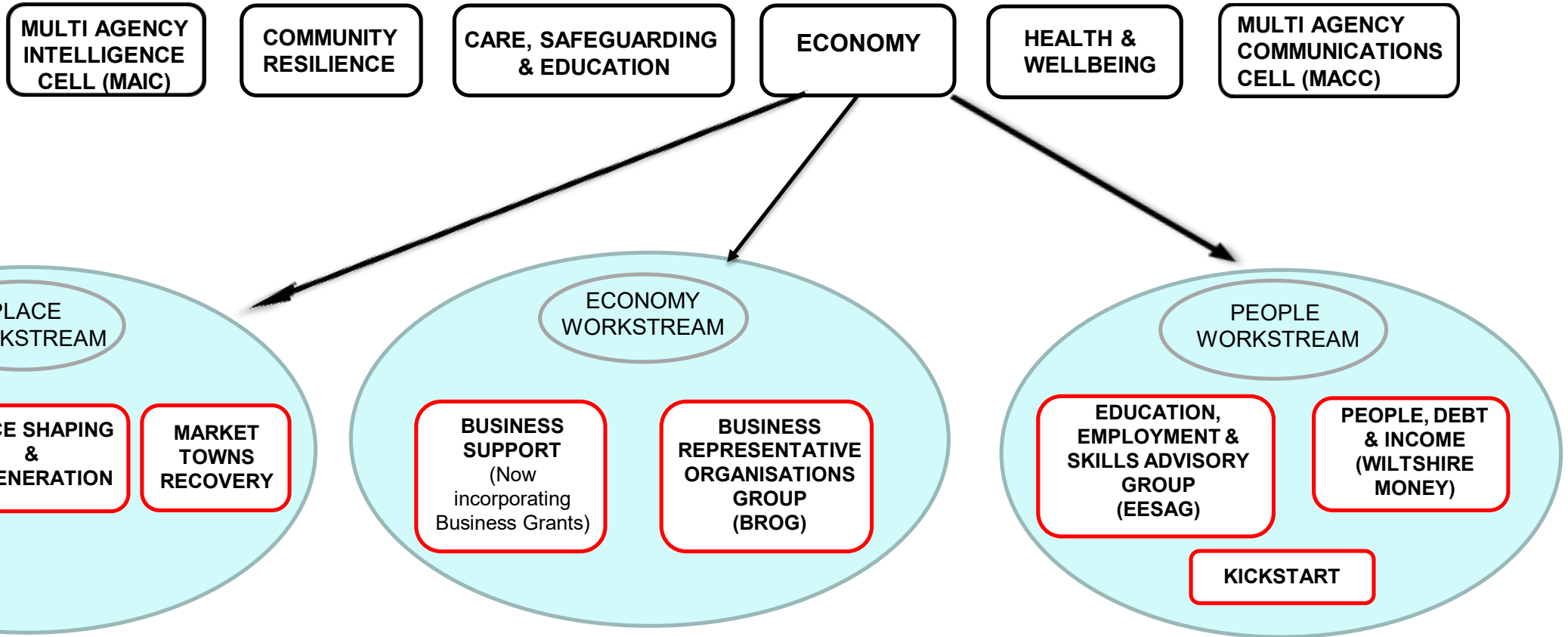
Wiltshire College
& University Centre


Wiltshire Council

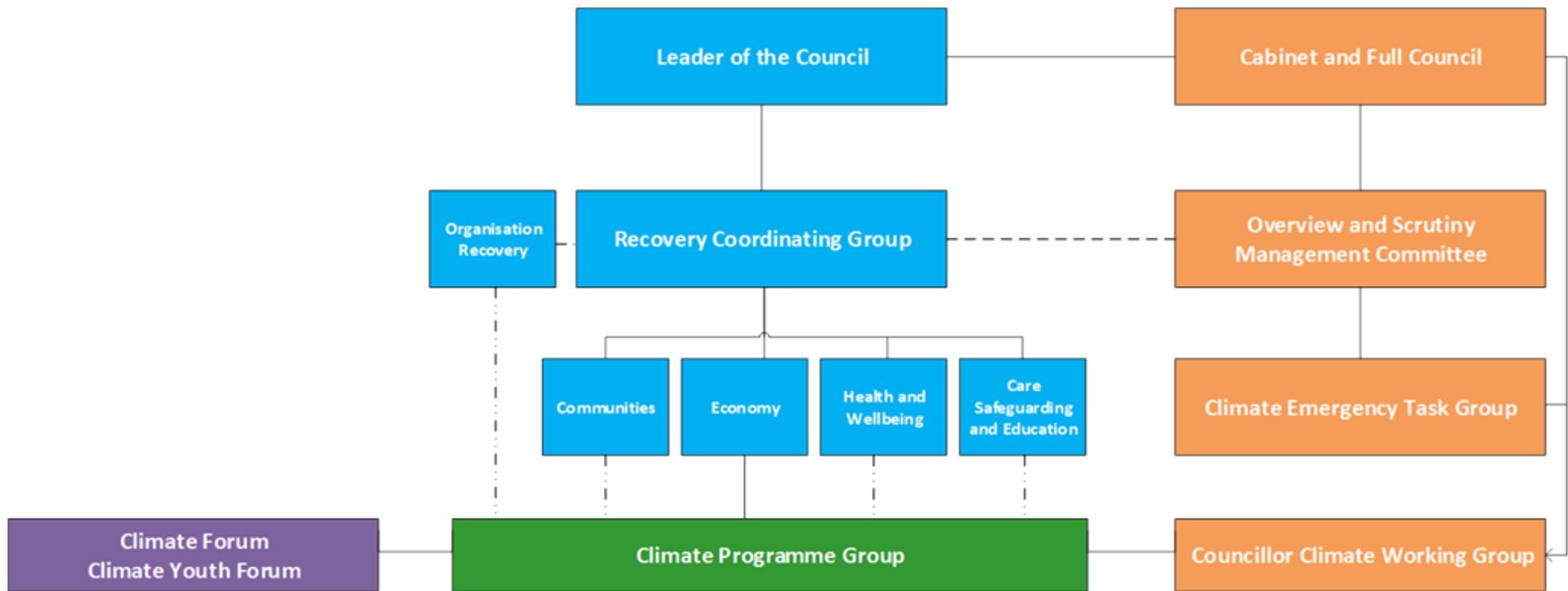
Where does a new Climate Strategy fit in?



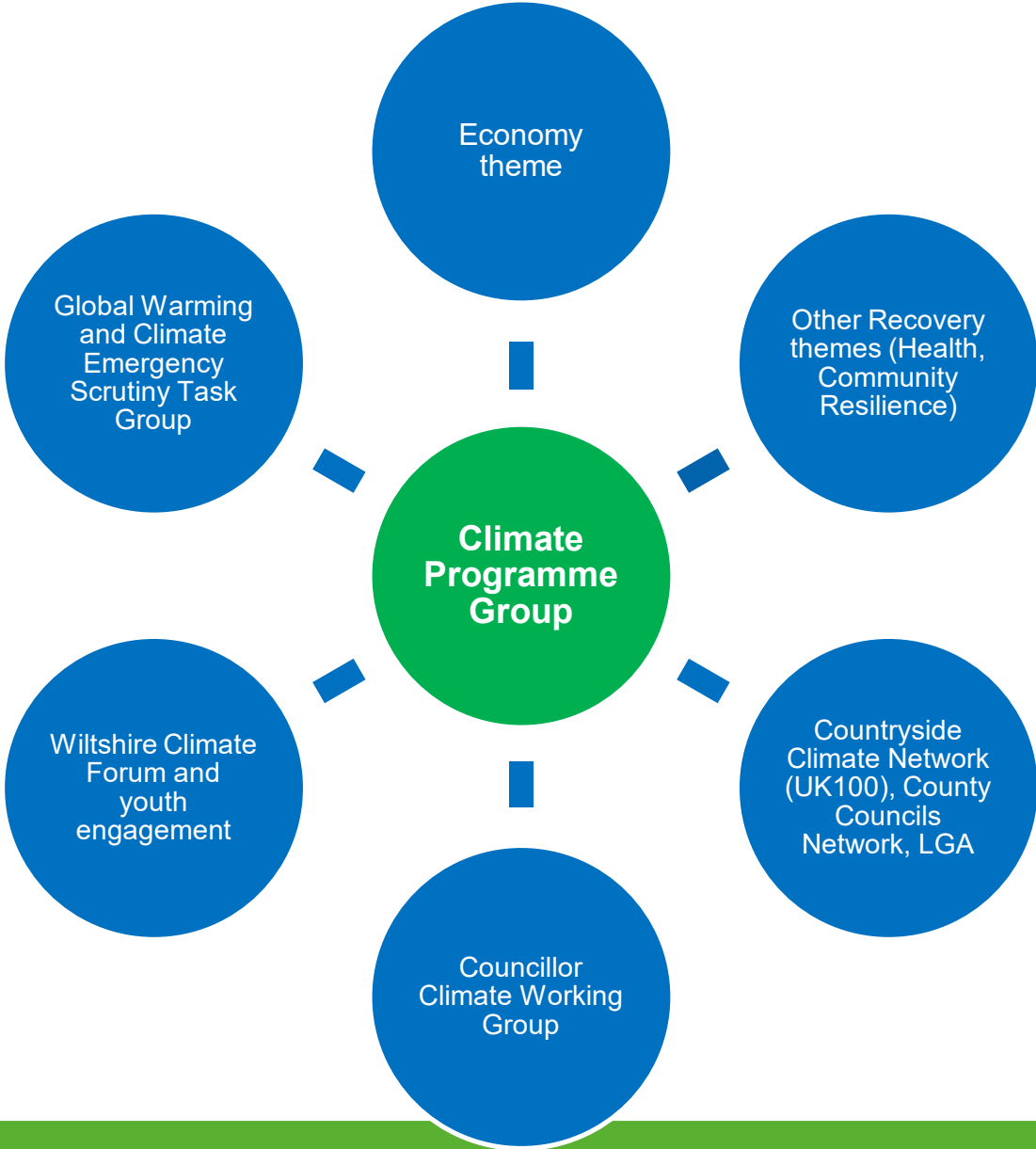
RECOVERY CO-ORDINATION GROUP (RCG)



 = Task & Finish Groups



Governance





Indicative timeline

- **Summer:**
 - establish council baseline (LGA tool)
 - engagement with environmental groups – pre partnership forum
- **Autumn:**
 - Councillor Climate Working Group meets
 - Initial Task group recommendations available
 - Climate team in post
 - First meeting of Climate Programme Group
 - Development of Strategy

Indicative timeline contd

- **Winter:**
 - 6 monthly update to February Cabinet and Council
 - draft strategy to February Cabinet
- **Spring:**
 - consult on strategy, alongside green and blue infrastructure strategy
 - review strategy in light of consultation
- **Summer:**
 - strategy adopted by Cabinet and Council